

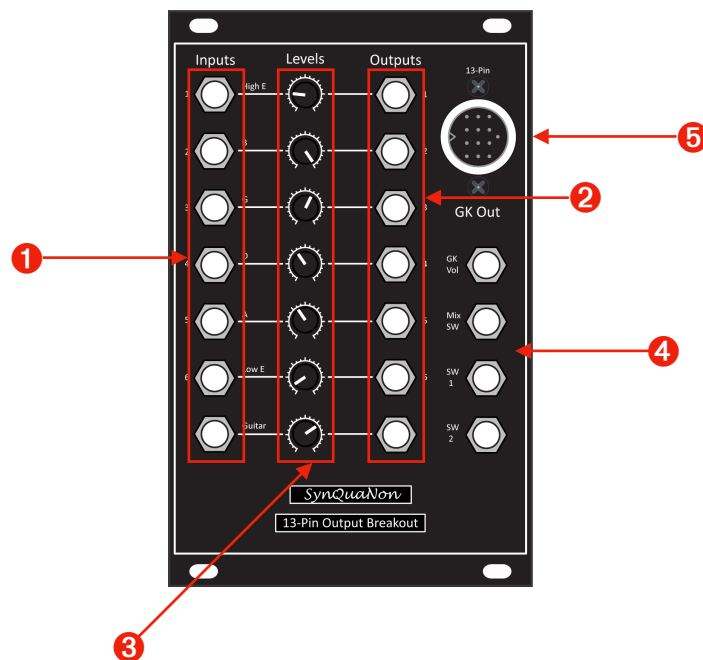
13-Pin Output Breakout Module

Roland/BOSS Guitar Synth Interface

Introduction

Congratulations on your purchase of this SynQuaNon product! It is our belief that our products will enable you to find new and interesting ways to create custom sounds with your synthesizer and other SynQuaNon modules. Check out our full line at www.synquanon.com.

Module front panel overview



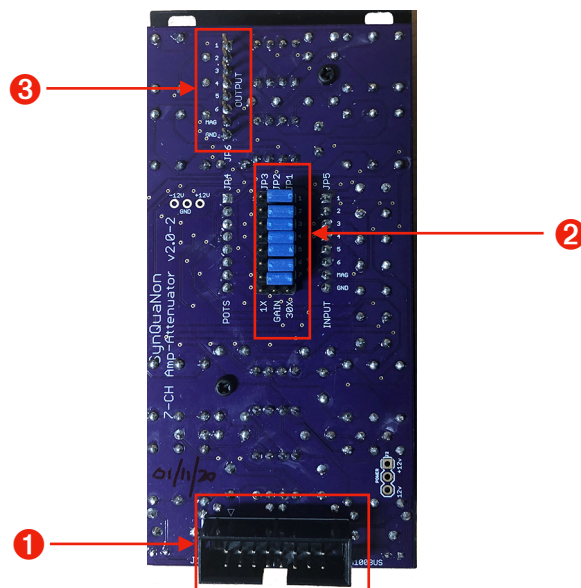
- | | |
|---------------------------|--|
| 1 Inputs | AC-coupled audio inputs 1 - 7; accept +/- 12V signals. |
| 2 Outputs | AC-coupled audio outputs 1 - 7; attenuate to match GK guitar synth levels. |
| 3 Gain controls | Individual potentiometers adjust gain from zero to level selected on rear header (range options are 0-20dB). |
| 4 Control voltages | Four standard GK guitar control voltage inputs (GK VOL, MIX SW, SW1, SW2). |
| 5 13-Pin GK Jack | GK output for Roland/BOSS guitar synths. |

Overview

The 13-Pin Output Breakout Module sends signals from your modular system to a Roland or BOSS guitar synthesizer. It provides attenuated outputs for each string signal as well as the passive pickup signal in order to match the levels typically produced by a GK guitar.

Standard GK CV signal inputs are provided to control the guitar synthesizer.

Module rear panel overview



- | | |
|-----------------------------|---|
| 1 A100 Bus | Keyed power connection with reverse polarity protection. Red stripe is on the left. |
| 2 Gain Select Header | Use the shorting plugs to select the amplifier gain range - unity gain is on the left (for attenuation use) and either 10x, 30x, or 100x is on the right. |
| 3 Output Header | Signals from output jacks are available on this header for patch cable-free connections to other SynQuaNon modules. |

Features

- Precision metal-film resistors for close channel gain matching.
- Low-noise audio op-amps for optimal AC performance.
- Selectable gain range (1x or 10x) for output on back of the module.
- Adjustable gain or attenuation to zero within each selected gain range.
- Ideal for guitar or bass single-string processing.
- Pairs well with 13-Pin Input Breakout, 7-Channel Amplifier-Attenuator, Hex VU Meter.

Technical Specifications + Downloads

Width	16 HP	Gain	0 dB (1x range)
Depth	40 mm		
Power	15 mA @ +12V		
	15 mA @ -12V		
	0 mA @ +5V	ModularGrid	13-Pin Output Breakout

Reverse power protection, resettable fuses, extensive power supply filtering.

Support

In case of difficulty:

1. Make sure power is available to the Eurorack and that it is turned ON.
2. Check the rear module power connection (turn OFF Eurorack power first)
3. Check patch cables for continuity or shorts.
4. Check level settings on front panel. Check gain select header on rear of module for proper gain range selection (turn OFF Eurorack power first).

For additional information please feel free to contact us at support@synquanon.com