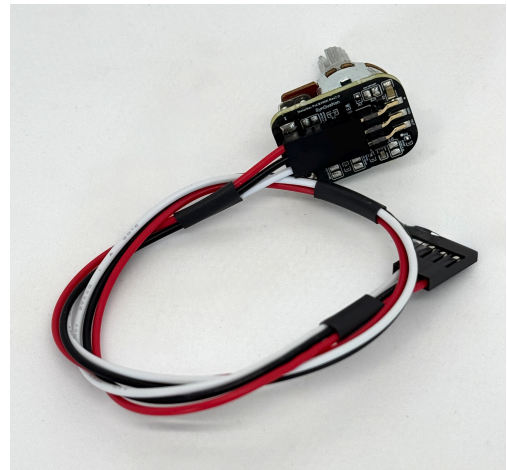
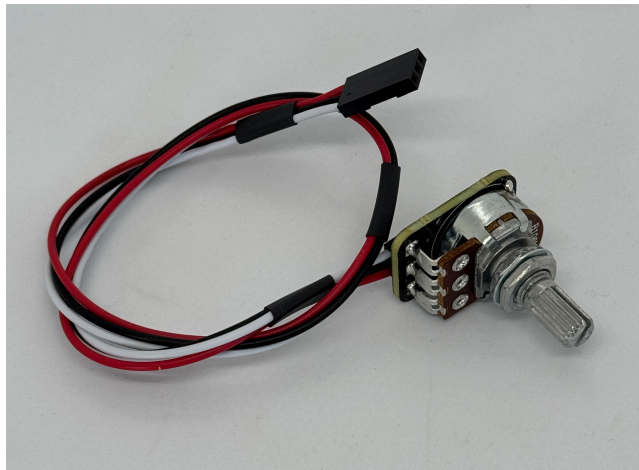


Single CV Distortion Potentiometer

Individual distortion pickup gain stage control for guitar

Introduction

Congratulations on your purchase of this SynQuaNon product! It is our belief that our products will enable you to find new and interesting ways to create custom sounds with your synthesizer and other SynQuaNon modules. Check out our full line at www.synquanon.com.



Distortion Pickup Connections

GAIN2 CV	GAIN1 CV
Red = Pot CW terminal (V+)	Red = Pot CW terminal (V+)
Black = Pot CCW terminal (GND)	Black = Pot CCW terminal (GND)
White = Pot wiper (GAIN2 CV)	White = Pot wiper (GAIN1 CV)

Overview

The SynQuaNon Single CV Distortion Potentiometer is an integral part of the pickup line. All pickups (Mono Distortion, Mono Distortion with Hex Clean Output, and Mono Distortion with Hex Distortion Output) have dual distortion gain stages built in, with distortion levels determined by control voltages applied through the rear GAIN1 and GAIN2 connectors.

The control voltages for GAIN1 and GAIN2 may be generated as follows:

- Two Single CV Distortion Potentiometers
- One Dual CV Distortion Potentiometer
- One Single CV Distortion Potentiometer and one Single Distortion Switch
- Two Single Distortion Switches

All Single CV Distortion Potentiometers are made with linear taper pots (50K, 100K, or 250K). The PCB contains circuitry to modify the taper through either one of these:

- Convert to Audio taper by shorting SJ3 with solder
- Convert to Antilog taper by shorting SJ5 with solder

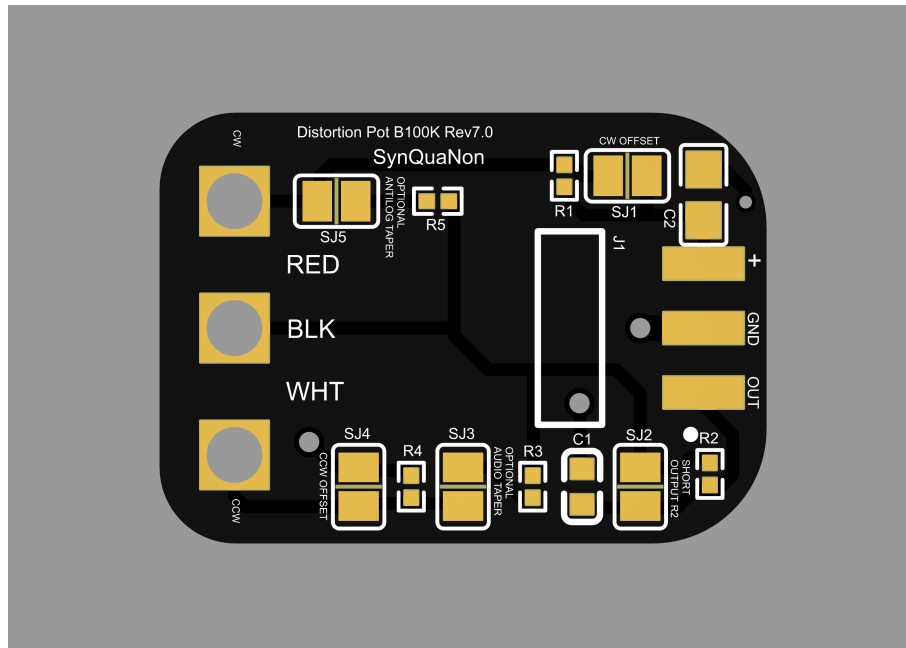
The potentiometer endpoints have small resistors in series to provide offsets. The PCB allows you to eliminate these as follows:

- Remove clockwise offset by shorting SJ1 with solder
- Remove counterclockwise offset by shorting SJ4 with solder

Finally there's a small resistor in series with the output which can also be removed as follows:

- Remove output series resistor by shorting SJ2

Single CV Distortion Potentiometer PCB Rear View



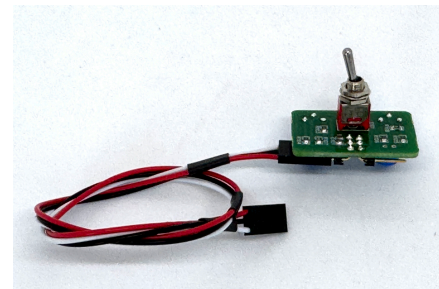
Technical Specifications

Available in B50K, B100K, and B250K resistance values
EMG-compatible solderless connection

Accessories

Options for CV control include the following:

- Dual CV Distortion potentiometer (concentric)
- Toggle switch with two trimpots for distortion presets



Support

In case of difficulty:

1. Make sure power is available to the pickup and that it is turned ON.
2. Check potentiometer connections and measure the voltage at the CV pins.

For additional information please feel free to contact us at support@synquanon.com